



# 2012-2013 GMT Reports for District (or Undistricted) **District 324B1**

**GMT: M NAGARAJAN**

**Location: INDIA**

**GMT CA: 6**

## CLUBS

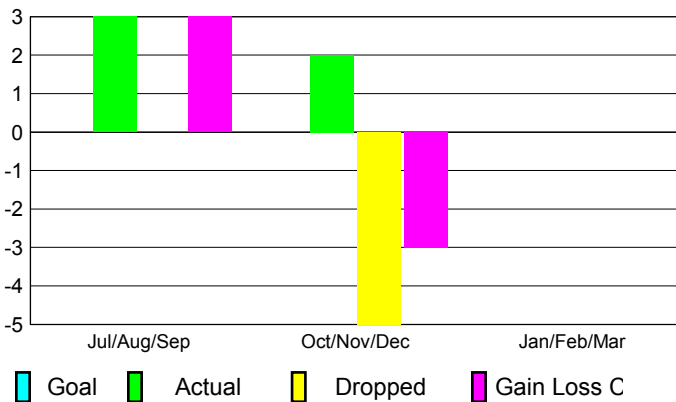
Club Results  
2012-2013

Clubs  
2011-2012

| Month         | New Club Goal | Actual New Clubs | Actual Dropped Clubs | Gain/Loss of Clubs | Gain/Loss of Clubs |
|---------------|---------------|------------------|----------------------|--------------------|--------------------|
| Jul/Aug/Sep   |               | 3                | 0                    | 3                  | 0                  |
| Oct/Nov/Dec   |               | 2                | -5                   | -3                 | 2                  |
| Jan/Feb/Mar   |               |                  |                      |                    | 0                  |
| <b>Totals</b> |               | <b>5</b>         | <b>-5</b>            | <b>0</b>           | <b>2</b>           |

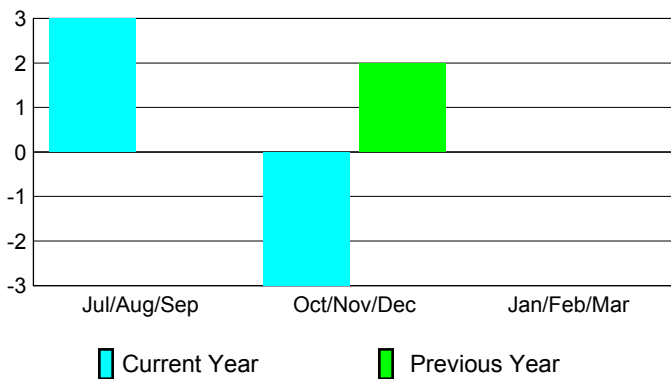
### Club Results 2012-2013

Goal, New, Dropped, Gain/Loss



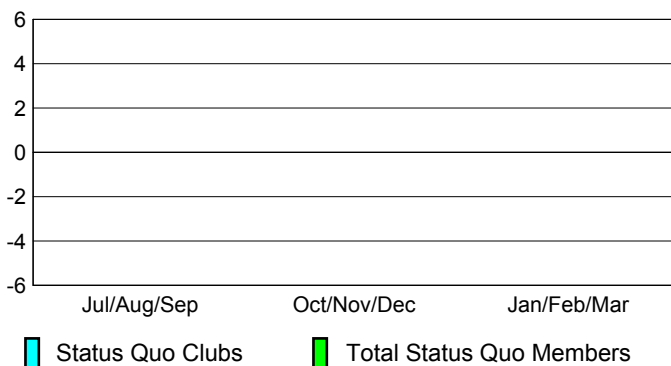
### Comparison of Club Gain/Loss

Current Year Compared to the Previous Year



### YTD Status Quo Clubs 2012-2013

Status Quo Clubs Compared to Status Quo Members



## MEMBERSHIP

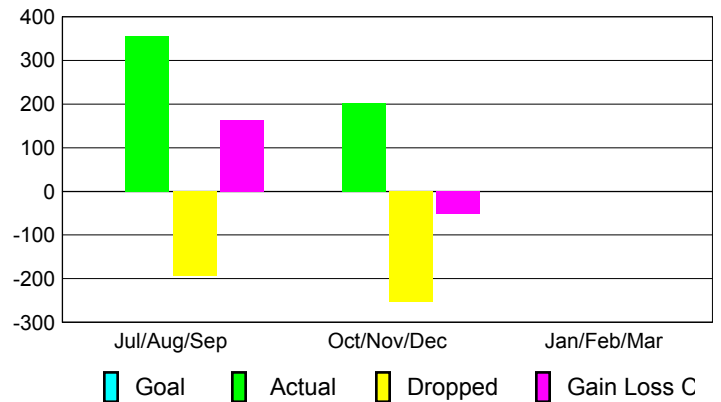
Membership Results  
2012-2013

Membership  
2011-2012

| Month         | Net Memb Goal | Actual New Memb | Actual Dropped Memb | Gain/Loss of Memb | Gain/Loss of Memb |
|---------------|---------------|-----------------|---------------------|-------------------|-------------------|
| Jul/Aug/Sep   |               | 356             | -193                | 163               | 60                |
| Oct/Nov/Dec   |               | 201             | -253                | -52               | 119               |
| Jan/Feb/Mar   |               |                 |                     |                   | 210               |
| <b>Totals</b> |               | <b>557</b>      | <b>-446</b>         | <b>111</b>        | <b>389</b>        |

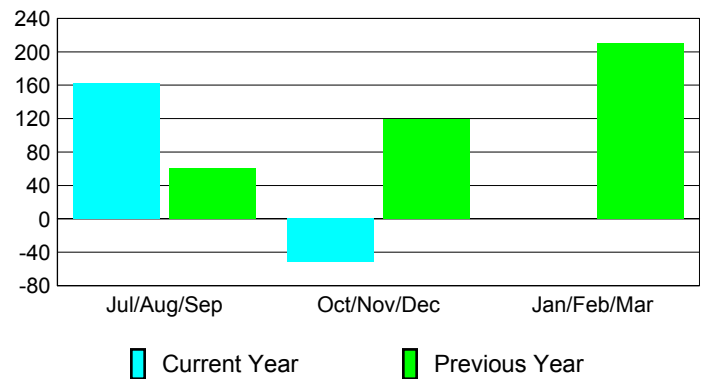
### Membership Results 2012-2013

Goal, New, Dropped, Gain/Loss

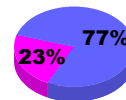


### Comparison of Membership Gain/Loss

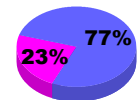
Current Year Compared to the Previous Year



### Gender Comparison 2012-2013



Jul/Aug/Sep



Oct/Nov/Dec

Jan/Feb/Mar

Male

Female